

The Texas A&M Veterinary Medical Diagnostic Laboratory (TVMDL) offers digital cytology to account-holding clients. Digital cytology provides rapid evaluation of photos taken with microscope cameras or smart phones. This service provides an official report and cytologic interpretation, typically *within one hour* of submission (during advertised hours). To enhance this service, submission of glass slides for evaluation is *included in the price* of the digital cytology test.

## Cytology preparation

Smears for digital cytology can be prepared in the same manner as glass slides. Monolayers (thin areas) will be important for capturing high-quality images. Stain with standard in-house methods, e.g. dip stains. If possible, retain some unstained preparations for follow-up submission.

## Cameras

There are several options for taking microscopic images in-house. Options include: built-in microscope cameras, cameras with eye-piece adapters, and smart phones (alone or with stabilizer).

## Image acquisition *(see examples on back)*

Digital cytology will be most rewarding for identification of infectious agents, inflammatory lesions, and monomorphic population of cells (neoplasia).

Include:

- A minimum of 2 images at varying magnifications.
- RBCs, neutrophils, or note magnifications to allow for evaluation of size.
- Multiple microscopic images and images of the gross lesion are encouraged.

## Submission of images

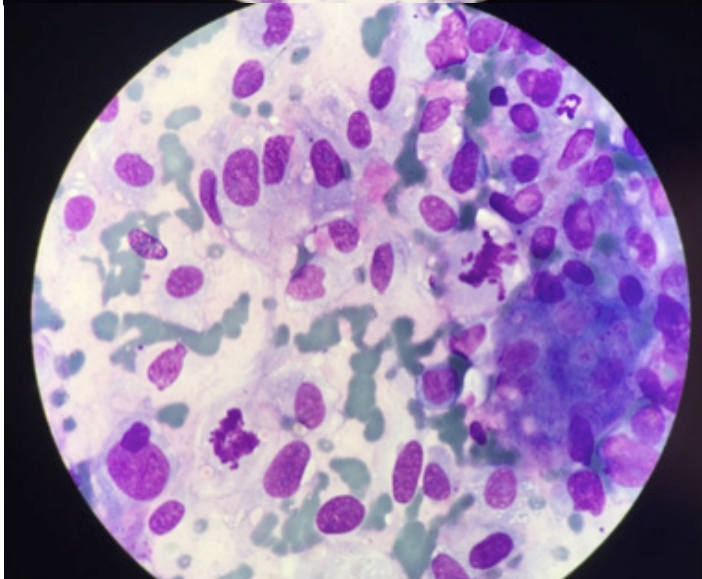
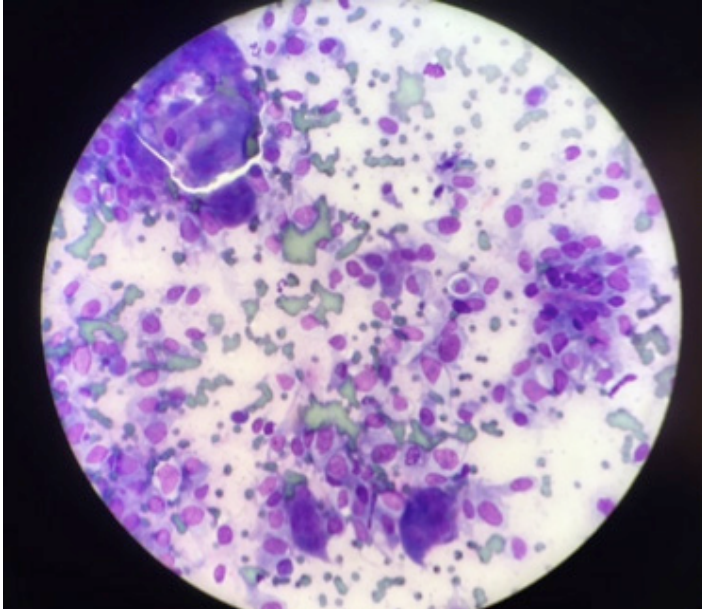
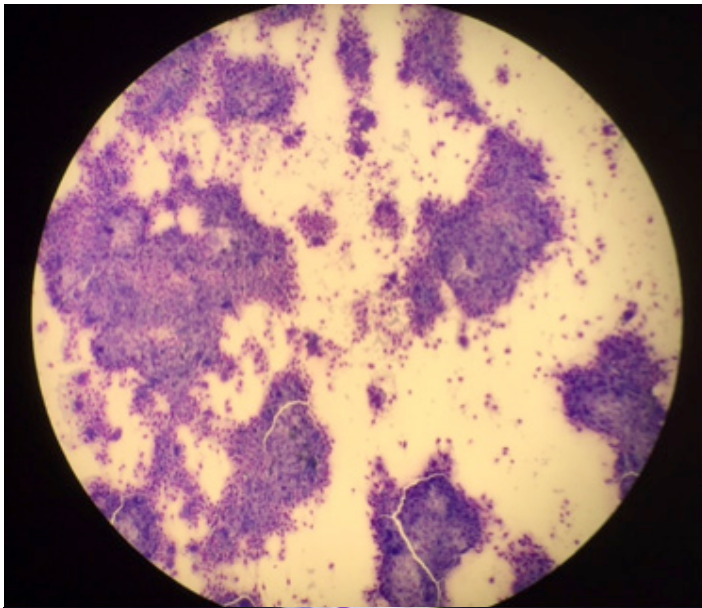
- Submit via the TVMDL Mobile app or email images to **[digitalcytology@tvmdl.tamu.edu](mailto:digitalcytology@tvmdl.tamu.edu)**.
- If submitting via email, include the digital cytology submission form found on [tvmdl.tamu.edu/forms](http://tvmdl.tamu.edu/forms) as a pdf or an image file.
- There are multiple options for form submission.
  - The form can be filled out on a computer and included as an attachment.
  - The form can be printed, completed by hand, photographed and submitted as an additional image.
  - Or, all the pertinent information from the form can be entered directly into the body of the email.
- Images should be saved as JPEG or PNG files.
  - Smart phone “medium” size / reduced file
- The total number of images should be noted on the submission form, especially if multiple emails are sent.

## Results

Images submitted Monday-Friday between 9 a.m. and 5 p.m. will often have results available within one hour.

Please do not hesitate to contact us with questions.

**Best Quality**



**Poor Quality**

