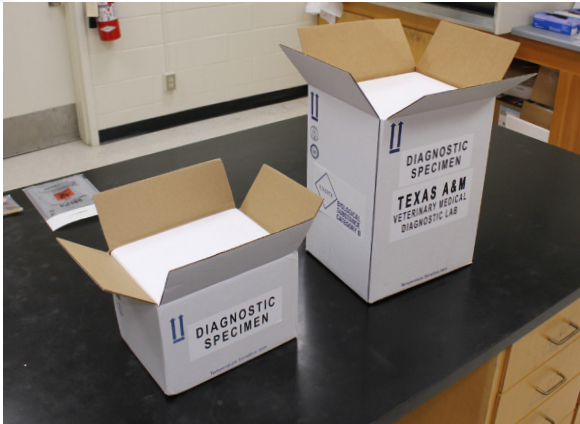


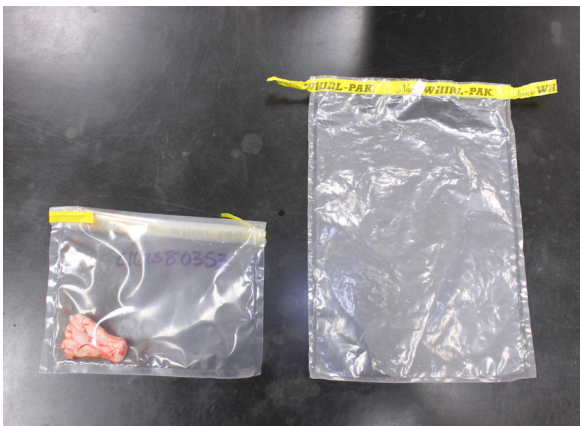
Proper CWD ELISA Packing Instructions



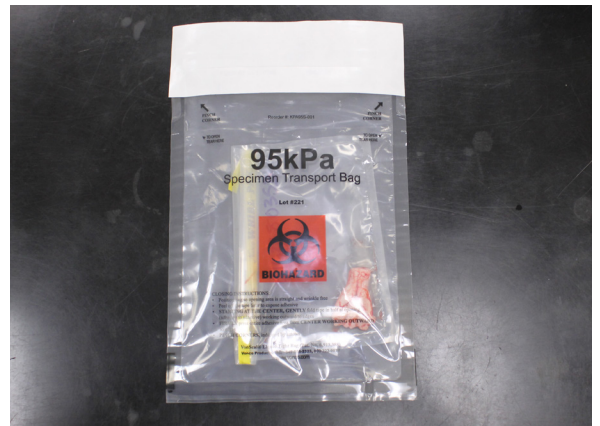
1. Choose the proper size shipping box and styrofoam cooler for the amount and size of samples being sent.



2. Place a cool pack in the bottom of the styrofoam cooler to keep the sample(s) properly preserved.

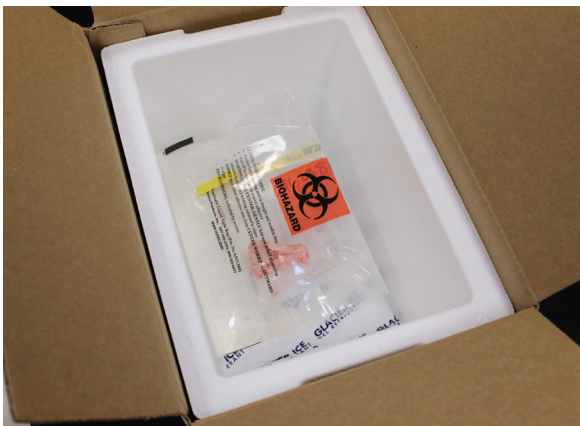


3. Place the sample in the whirl-pak. Squeeze out as much air as possible. Fold the top down in a rolling fashion. Fold the tabs over to seal the whirl-pak.



4. Place the whirl-pak in biohazard bag and seal closed.

*Be sure to follow DOT requirements when shipping biohazard materials



5. Place the biohazard bag directly on the cool pack in the styrofoam cooler.



6. Use crumpled paper to fill the void in the styrofoam box to avoid the sample from moving around.